



Product Type: ASC/2S Controller

Password for Ethernet Communications Module Firmware

Reference: AN2095

Date: 13 June 2008

Purpose

This Application Note gives the changes in the procedure to configure the ASC/2S Ethernet Communications Module. The changes are because of new firmware with more security features in the Digi Connect ME Ethernet module (embedded).

Introduction

The procedure in this Application Note is for new Digi Connect ME modules that were shipped on or after August 2006. To make configuration changes with the new modules, it is necessary to enter the default username and password:

User: root
Password: dbps

NOTE: For modules that were shipped before August 2006, to make configuration changes, it is NOT necessary to enter the default password.

Applications

After you configure the network settings in the ASC/2S Device Discovery Finder program, you may get the error message shown on the right.

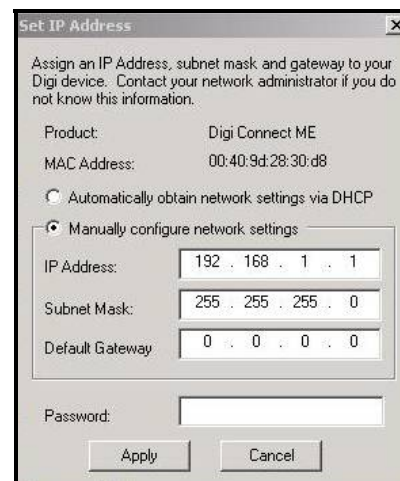
If you get this message:

1. Click [OK].
2. Continue with the procedure below.



After you enter the new network settings, to change the IP address:

1. Enter the default password, **dbps**, into the "Password" field.
2. Click [Apply].
3. The program returns to the main menu.





ASC/2S Controller

AN2095: Password for Ethernet Communications Module Firmware

When you open the web interface, the browser goes to the login page, shown below. To reach the configuration and management page:

1. Enter the default username, **root**, and password, **dbps**, into the Login fields.
2. Click [Login].
3. The browser should open the configuration and management page.

NOTE: This page does **NOT** come into view on modules with older firmware.

The screenshot shows the login page for the Digi Connect ME Configuration and Management interface. The page title is "Digi Connect ME Configuration and Management". The Digi Connectware logo is in the top left. A "Help" link is in the top right. The main content area is titled "Login" and contains the following text: "Welcome to the Configuration and Management interface of the Digi Connect ME", "Please specify the username and password to login to the web interface.", and "See the User Guide and documentation for more information on logging in or retrieving a lost password." There are two input fields: "Username:" with the value "root" and "Password:" with the value "dbps". A "Login" button is below the password field. At the bottom, the copyright notice reads: "Copyright © 1996-2005 Digi International, Inc. All rights reserved. www.digi.com".