



Blue Series Cabinets





What, exactly, is the Econolite Blue Series?

- The most commonly asked-for traffic cabinet configurations.
- Includes cabinets from the ATCC, NEMA, 332, and Hybrid product lines.
- Provides ready-to-ship cabinets for every market.
- Offers a standard platform for customers, allowing for simplified training and troubleshooting.
- Cost-effective for agencies of any size.
- Cabinets are designed to meet and exceed UL508 standards and built by IPC certified technicians in a UL approved factory that is ISO 9001 certified.

The Blue Series



ATCC Standard

Part Number: ATCC1052

• Benefits

- Safer, smarter, greener
- Flexible mounting options
- Touch-safe
- Rework without going dark
- Future-proof
- Room for expansion
- ATC 5301-compliant
- Manufacturer interchangeability

• Features

- Compact & modular design
- UL, ISO, & IPC

• ATCC1052 Design

- 16x channels of output
- 24x channels of input
- 120 VAC utility & signals
- 332L Aluminum enclosure
- Natural exterior – white interior

• Included Plugins

- 1x HDFU
- 8x HDSPs, FTRs, red and yellow flash program blocks
- 2x SIU
- 1x ADU
- 4x 2-channel detectors
- 2x 2-channel DC isolators
- 32 channel CMU
- Input and output surge arrestors
- 1x rack mount power supply

Caltrans 332LS Errata 4

Part Number: STCAB3165

- **Benefits**
 - Standard rack mount design
 - Most common enclosure mounting features
 - Touch-safe
 - Integrated railroad
 - Easily replaceable fans
 - Leverage Caltrans 2009 TEES
- **Features**
 - UL, ISO, & IPC
 - LED Lights
 - Battery backup system connections
 - I & J File (28 channels)
 - 18x load switches (2 for RR)
- **Included Plugins required by Caltrans**
 - 1x flasher, 2x 2-channel DC isolators, 8x flash transfer relays, 1x 210 signal monitor (CMU)



Hybrid 332

Part Number: STCAB3351

- **Benefits**
 - Compact/dense cabinet layout
 - Most rack-based common enclosure mounting features
- **Features**
 - UL, ISO, & IPC
 - Flash program blocks
 - SDLC Serial Bus replaces point to point connections
- **Benefits of SDLC**
 - Detectors interfaced via Bus Interface Unit (BIU)
 - Decreased failure potential
 - Malfunction Management Unit (MMU) retains point-to-point wiring to monitor signals
- **Included Components**
 - Detector rack, output loadbay with BIUs, MMU, and power supply



TS2 Type 1 – P44 / Plug-n-Go

Part Number: CAB18036

- **Benefits**

- Most common enclosure and mounting features
- Wide main panel for plenty of room to clear shelf
- Easy to replace parts with Plug-n-Go
- Easy to configure - reprogram in software instead of moving wires

- **Features**

- UL, ISO, & IPC
- Horizontal Main Panel
- SDLC Serial Bus replaces A, B, C, & D cable harnesses of TS1

- **Benefits of SDLC**

- Load switches and detectors interfaced via Bus Interface Unit (BIU)
- Decreased failure potential
- MMU retains point to point wiring to monitor signals

- **Included Components**

- Detector rack and main panel with BIUs



TS2 Type 1 – R77 / Plug-n-Go

Part Number: CAB18037

- **Benefits**

- Large enclosure
- Narrow main panel for more room to work with side panel features
- Ample space for equipment

- **Features**

- UL, ISO, & IPC
- Vertical Main Panel
- SDLC Serial Bus replaces A, B, C, & D cable harnesses of TS1
- Same bolt pattern as P44

- **Benefits of SDLC**

- Load switches and detectors interfaced via BIU
- Decreased failure potential
- MMU retains point to point wiring to monitor signals

- **Included Components**

- Detector rack and main panel with BIUs



TS2 Type 2 – P44

Part Number: CAB18038

- **Benefits**

- Easier to switch from TS1 to TS2-2 than to TS2-1
- Most common enclosure
- Wide main panel for plenty of room to clear shelf

- **Features**

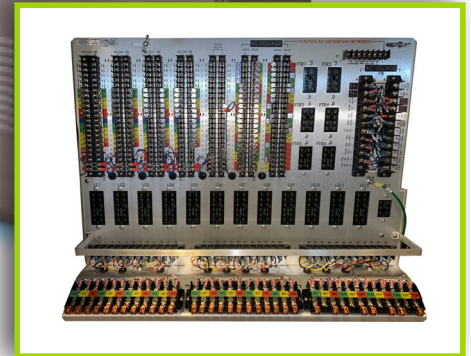
- UL, ISO, & IPC
- Horizontal Main Panel

- **Benefits of SDLC**

- Detectors interfaced via BIU
- Decreased failure potential
- MMU retains point to point wiring to monitor signals
- Standardization & multiple sourcing

- **Included Components**

- Detector rack and main panel with BIUs



** All pictures may vary from actual cabinet*

Blue Line Plug-Ins

Flasher

Part Number: 44623P5

2 Circuit; 15A; Solid State

Manufactured by Eberle Design, Inc (EDI) as P/N: 810

Flash Transfer Relay

Part Number: 0767104805

Coil Voltage LED

Manufactured by Struthers-Dunn as P/N: 21XBXPL-120VAC

Load Switch

Part Number: 31095G20

Model 200; Input Ind

Manufactured by Power Distribution & Controls (PDC) as P/N: SSS-86-3

Malfunction Management Unit

Part Number: 1133-141

Ethernet Port

Manufactured by Eberle Design, Inc (EDI) as P/N: MMU2-16LEip-E

Power Supply

Part Number: 1084-003

1.25 Amp; Shelf Mount

Manufactured by Eberle Design, Inc (EDI) as P/N: PS200-E

Detector

Part Number: 44665G55

2 Ch; RM

Manufactured by Eberle Design, Inc (EDI) as P/N: LM622-E



Why do agencies use the Blue Series?

- The Blue Series offers a variety of standard cabinet configurations to suit different customer needs.
- The ATCC Standard is well-suited for customers looking to future-proof their intersections.
- The NEMA TS2 Type 1 and TS2 Type 2 cabinets are a great fit for customers looking for the security of a product line with a history of safety and reliability.
- The Caltrans 332LS is an excellent choice for customers who want the certification of a Caltrans-approved design and manufacturer.
- The Hybrid, which combines the density of a rack mount 332LS with the sophistication of serial based TS2 architecture, brings together the best of both worlds.

How do these cabinets benefit the driving public?

- Econolite's traffic control cabinets ensure the highest levels of intersection safety and traffic management capabilities.
- Our traffic cabinets are designed with the agency in mind to meet their traffic management and ITS program needs now and the connected vehicle and smart city objectives of the future.
- Econolite also provides unparalleled access to virtually all the peripheral components any agency may need.



Econolite is the Leader in One-Stop-Shop Traffic Management Solutions.

From policy, system-planning, and design to system and sensor products, integration, implementation, operation, maintenance and support, as well as consulting services for connected and automated vehicles (CAVs).



1250 N. Tustin Avenue, Anaheim, CA 92807 · 714-630-3700 · sales@econolite.com · www.econolite.com

© 2020 Econolite. All rights reserved. Econolite reserves the right to change or update these specifications at any time without prior notification.