

# Cabinets for Traffic Management

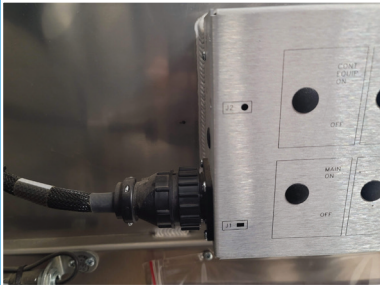
## Plug-N-Go vs Hardwire

Plug-N-Go traffic cabinets feature a modular component design that allows for standardization of cabinet wiring interconnection, as well as enhanced power distribution, improved safety, and increased reliability. The comparison below illustrates the benefits of a Plug-N-Go cabinet versus a hardwired cabinet.

### Key Benefits

- More cost effective
- 10 hours faster to manufacture over hardwired
- Connectorized components are easier to swap out/replace components
- Cleaner wiring

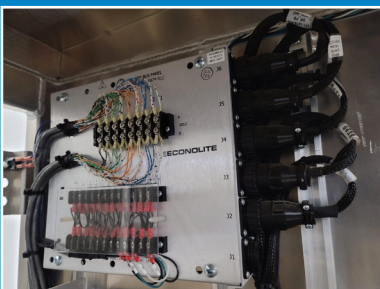
### Plug-N-Go



A

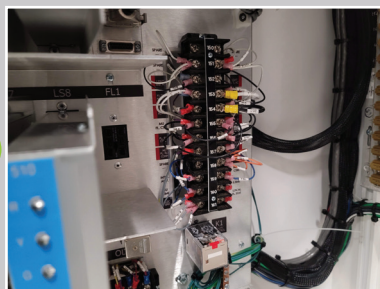


B



C

### Hardwired



**A:** Up to 50 wires coming coming out of police aux panel in hardwired cabinet that needs to be soldered or lugged. In a PnG, it is 1 connector

**B:** On the main panel, an entire terminal block worth of wires on a hardwire can be replaced with a single connector for PnG

**C:** On a power distributor panel, each cabinet components need to be hand wired to the terminal block in a hardwired cabinet. In a PnG design, each component is easily connected with a plug



**Plug-N-Go**



**Hardwired**



**Modular Component Design**

The design features of the modular components allow for the standardization of cabinet wiring interconnection.

**Enhanced Power Distribution**

The Power Bus assembly reduces the chance of wiring errors and problems associated with electrical connections. All cabinet equipment that requires filtered power to operate is connected to the Power Bus assembly with highly reliable Plug-N-Go connectors.

**Improved Safety**

Utilization of a 24-volt disconnect relay provides additional isolation during flash conditions.

**Field Replaceable Modular Components**

The modular cabinet components are easily removed or replaced with the use of simple hand tools.

**TS2 Type-1 Main Panel Size Reduced**

Reducing the size of the TS2 Type-1 main panel eliminates the need for removal of any equipment when lowering the panel.

**Interface Cables with Connectors Simplifies Point-to-Point Wiring**

Utilizing connectors in lieu of point-to-point manual wiring provides greater flexibility for installation and wiring changes.

**Increased Reliability**

Connectors utilized in all modular cabinet assemblies have been field-tested in both military and medical applications.

**Reduces Maintenance Time**

Easily replaceable modular components allow the service technicians to restore the system with minimum downtime.

**Simplifies Troubleshooting & Diagnostics**

Common cabinet modules provide easy isolation and eliminate the need for extensive troubleshooting and diagnostics.

**Available with NEMA TS2 Type-1 and Type-2 Terminals & Facilities**

- All modular cabinet components are designed to be used with both TS2 Type-1 and Type-2 main panels.
- Also available with NEMA TS1 is a 16-position horizontal load bay.

**Options**

- Plug-N-Go TS2 Type-1
- Plug-N-Go TS2 Type-2

