



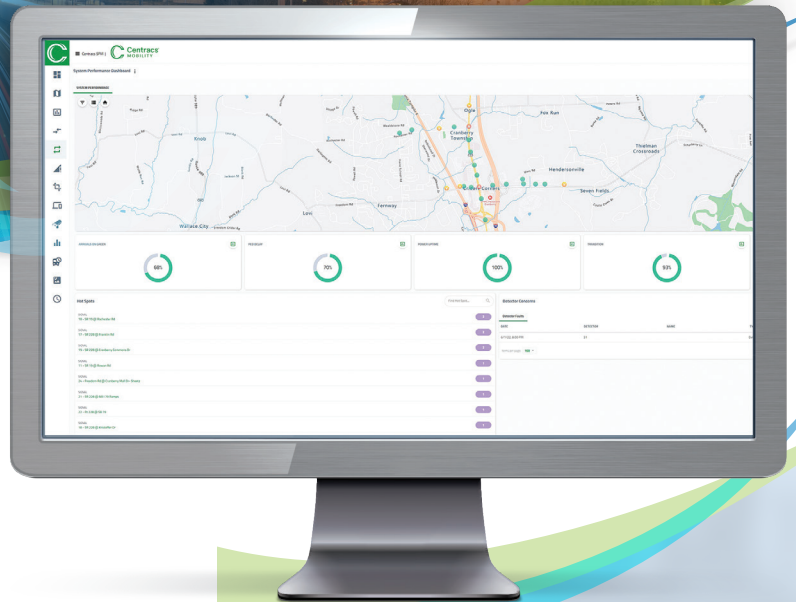
Signal Performance Measures (SPM)

Overview

Centracs® SPM provides incredibly rich data analytics tools by building from the high-resolution data capabilities of modern controllers. Centracs SPM is a cloud-based software application designed to present this data in a user-friendly, easily accessible manner to elevate the role of the Traffic Engineer.

Centracs SPM improves operational efficiencies of traffic signal management by providing high-resolution data that supports the development of performance-based strategies. With this functionality, transportation agencies are able to proactively optimize traffic signal programming based on timely and accurate information, and eliminate the cost of manual traffic counts.

Centracs SPM clearly identifies areas of concern through the incorporation of heat maps which focus the attention of the Traffic Engineer, and tools that quickly resolve issues and restore traffic back to optimum conditions.

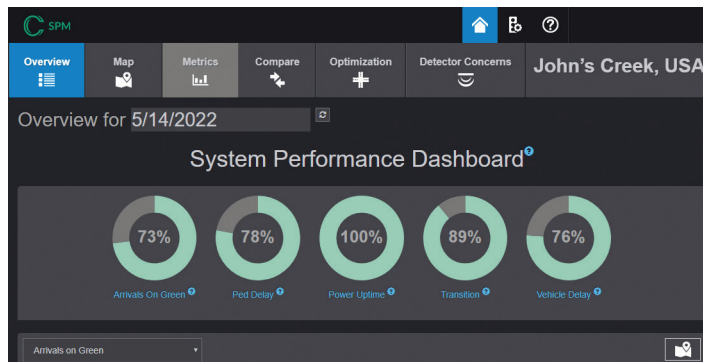


Key Features

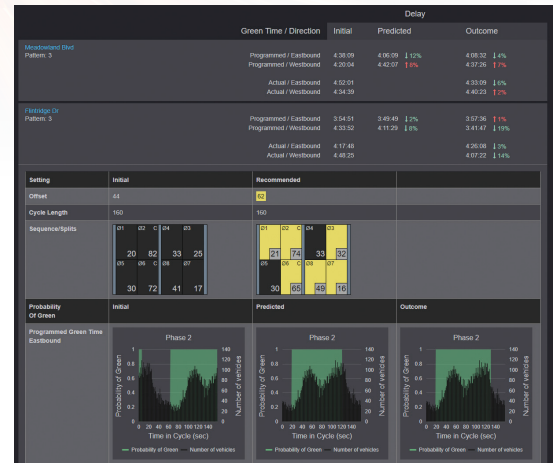
- **Cloud-based access from any place, on any platform, and at any time**
- **Measure charts, user-selectable data parameters, and user-defined performance metrics comparisons**
- **State-of-the-Art analysis tools that allow for more efficient and effective use of staff resources**
- **Transforms qualitative and quantitative data into actionable information**
- **Continuous data management to signal management and operations**

SPM Module Interface

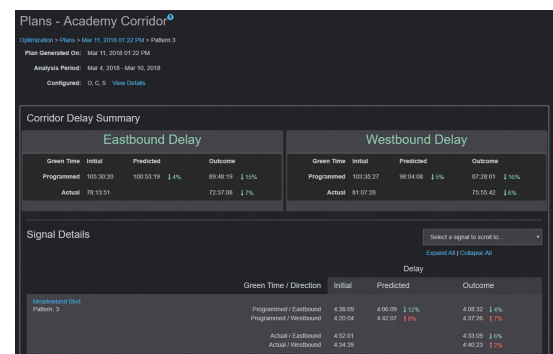
Access to your data has never been easier. Centrac's® SPM offers more than 20 different data set charts and graphs to help agencies proactively manage network performance on a daily basis. These data sets allow Traffic Engineers the ability to make critical decisions with greater ease and efficiency.



System Performance Dashboard



Plus Details



Corridor Plan Summary

Available Data Sets

- Arrivals on green
- Arrivals on red
- Daily split failure
- Flow rates
- Green times
- Pedestrian delays
- Percent pedestrian
- Preempt request and services
- Preemption details (EMV/Rail)
- Purdue coordination diagram
- Red light running
- Split failures
- Split monitor
- Total pedestrian cycles
- Transition duration
- Volume to capacity



Learn more
about additional
Centrac capabilities

Key Benefits

- **Improves operation efficiencies**
- **Provides high-resolution data for performance-based strategies**
- **Reduces or eliminates costs of manual traffic counts**
- **Provides new levels of mobility and safety**
- **Has continuous monitoring**
- **Provides real-time incident information and travel time (where available)**

