



Equipment shown in cabinet is for demonstration purposes only. See details on back for what is included.

336 Cabinets

Cabinets for Traffic Management

The Safetran® 336 Series of traffic control cabinets are built to the exacting standards and specifications of NYDOT, Caltrans, FHWA and TEES. Each 336 cabinet features a 19-inch EIA rack that provides ultimate ease and flexibility of traffic control component configuration.

The modular design of Econolite's Safetran 336 cabinet provides control of up to eight vehicle and four pedestrian phases. The 336 Series of cabinets also meet the stringent weatherproof requirements for State of California TEES enclosures and can be delivered UL-approved.

Econolite's Safetran 336 Series of traffic cabinet securely houses the signal controller and other vital intersection electronic equipment that manages efficient intersection operations and traffic flow. The strict adherence to industry standards and specifications ensures the highest levels of safety for all roadway users.

Key Features

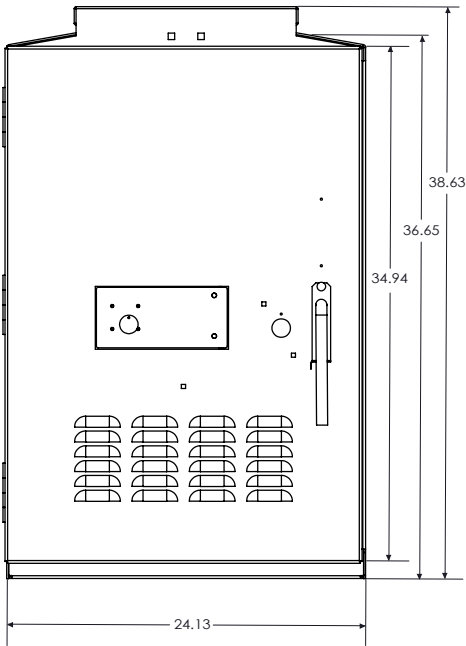
- Meet all Caltrans requirements
- Two doors (front and rear)
- Mounted one base, side of pole, or top of post
- Three-point locking system
- Suited for intersection and controllers and accessories



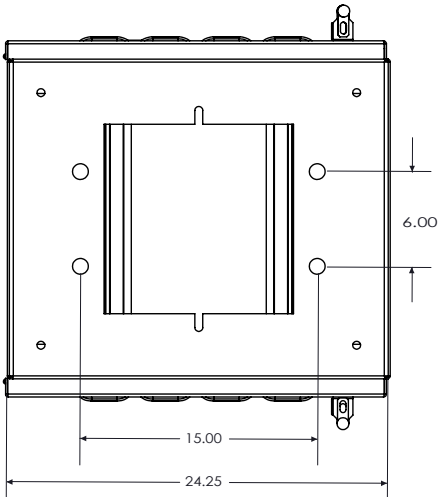
336 Cabinets: Description

The use of standard sub-assemblies, as pre-defined by Caltrans, assures interchangeability between manufactures. All sub-assemblies are mounted in a removable 19" EIA rack for ease of maintenance and are fully interchangeable with the Model 332, 336S, and 333 cabinets. Constructed of heavy 0.125 inch aluminum, the 336 provides a durable, weatherproof enclosure. The 336 can be base mounted using an 8" high "M" base adapter or can be mounted on the side-of-pole or top-of-post positions.

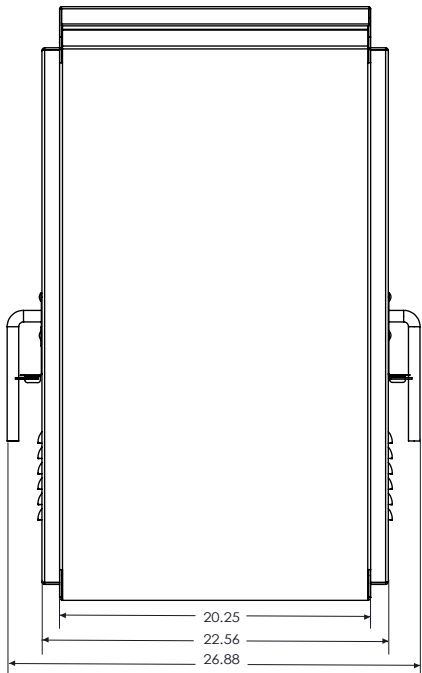
Specifications	336 Cabinets
Dimensions	36 in H X 24 in W X 20 in D
Finish	Anodized, bare, painted, or anti-graffiti
Material	Aluminum 0.125 in.
Ship Weight	265 lbs.



Front View



Top View



Side View