



*Equipment shown in cabinet is for demonstration purposes only. See details on back for what is included.*

## 338 Cabinets

### Cabinets for Traffic Management

Safetran® 338 series of traffic control cabinets are built to the exacting standards and specifications of New York Department of Transportation (NYDOT), California Department of Transportation (Caltrans), the Federal Highway Administration (FHWA), and Transportation Electrical Equipment Specifications (TEES). Each Safetran 338 cabinet features a 19-inch EIA rack that provides ultimate ease and flexibility of traffic control component configuration.

The modular design of Econolite's Safetran 338 cabinet provides control for up to eight vehicle and four pedestrian phases. Our Safetran 338 cabinets also meet the stringent weatherproof requirements for State of California TEES enclosures.

Safetran 338 cabinets securely house the signal controller and other vital intersection electronic equipment that manage the efficient operation and traffic flow of intersections. Econolite's strict adherence to industry standards and specifications ensures the highest levels of safety for all roadway users.

#### Key Features

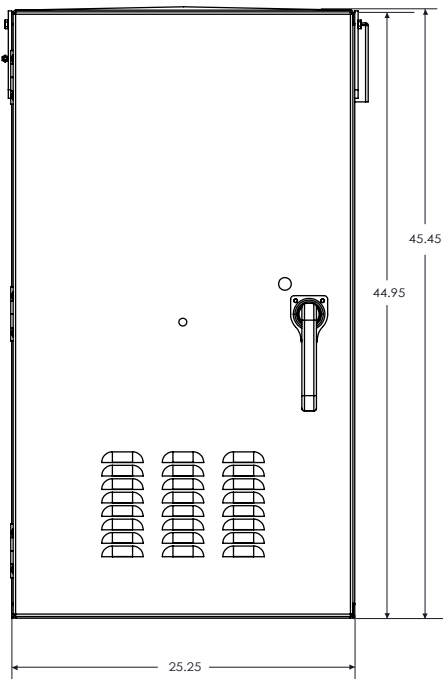
- Meet all FHWA requirements
- Two door (one front, one rear)
- Mounted one base, side of pole, or top of post
- Three-point locking system
- Suited for intersection and controllers and accessories
- 0.125-inch thick aluminum

## 338 Cabinets: Description

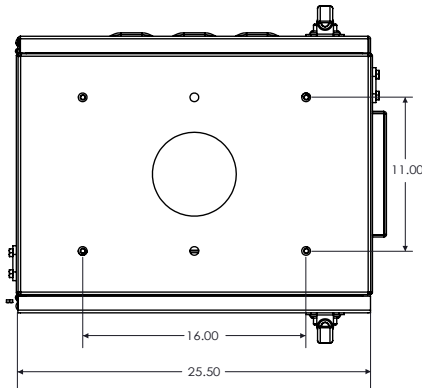
SFTC

The use of standard sub-assemblies, as pre-defined by Caltrans, assures interchangeability between manufacturers. All sub-assemblies are mounted in a removable 19" EIA rack for ease of maintenance and are fully interchangeable with the Model 332, 336 and 333 cabinets. The 338B cabinet is taller and wider than a standard 338 cabinet and has space available for optional equipment. Constructed of heavy 0.125-inch aluminum, the 338B provides a durable, weatherproof enclosure. The 338B can be based mounted using a base adapter or can be mounted on the side-of-pole or top-of-post positions.

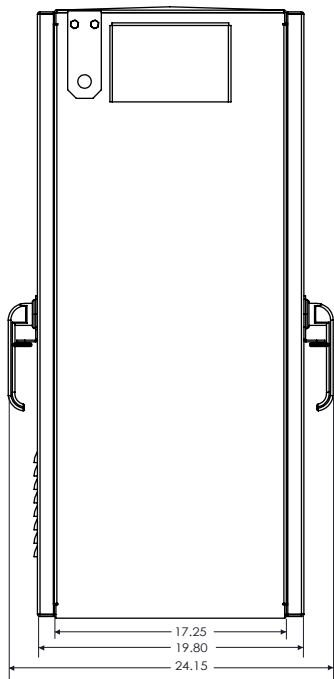
Specifications	338 Cabinet
Dimensions	46 in H X 26 in W X 18 in D
Finish	Anodized, bare, painted, or anti-graffiti
Material	Aluminum 0.125 in
Ship Weight	280 lbs.



Front View



Top View



Side View