



# Autoscope® **OPTiVU**

## High-Performance Video Detection

Autoscope® OptiVu PLC (Power Line Communications) connection is taking video detection to new heights by offering smart object detection algorithms powered by AI and machine learning. The camera and processor provide high performance vehicle detection, bicycle and pedestrian detection, enhanced traffic data collection in real-time, and Smart City readiness with connectivity to other systems.

Building on more than three decades of proven above ground video detection experience, Autoscope OptiVu delivers the highest levels of innovation and performance in an easy-to-use detection solution that supports a variety of traffic management and ITS applications. The performance of OptiVu is robust and reliable, and is based on a new hardware platform designed to enable future capabilities and solutions.



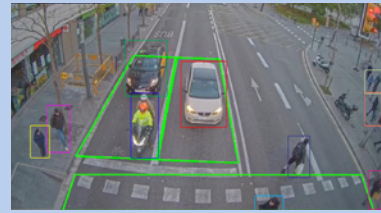
### Key features

- AI-powered detection using advanced machine learning algorithms
- Object tracking with classification
- Pedestrian and bicycle detection and counts
- Smart City readiness with connectivity to other systems
- PLC (Power Line Communication)

# Smart City ready with vehicle, bicycle, and pedestrian detection



Autoscope® OptiVu provides the foundation every city requires to attract new residents, cultivate a flourishing economy, and offer improved living through safer roadways.



## Detection system data analytics and reporting

Enhance your Autoscope® OptiVu video detection system with the advanced, cloud-based data reporting, analytics, and monitoring capabilities of Centrac® +Detect. +Detect automatically and virtually reports traffic conditions and critical datasets, such as road user classifications, volumes, turning movements, speeds, and signal performance metrics.



Specifications	Autoscope OptiVu PLC Camera
<b>Power</b>	37V to 57V, (Max power 12.95W)
<b>Camera</b>	<ul style="list-style-type: none"> <li>• CMOS image sensor</li> <li>• Minimum Illumination: 0.004 to 0.0004 lx</li> <li>• Resolution: High-Definition (HD)</li> <li>• White balance: auto</li> </ul>
<b>Lens</b>	<ul style="list-style-type: none"> <li>• Focal length: 10X zoom lens</li> <li>• Horizontal: 62°- 7.6°</li> <li>• Vertical: 34.4°- 4.4°</li> <li>• Focal length: 4.7 - 47mm</li> </ul>
<b>Housing</b>	<ul style="list-style-type: none"> <li>• Aluminum die cast and resin</li> <li>• Waterproof and dust-tight housing (IP68)</li> <li>• Hydrophilic faceplate coating</li> <li>• Adjustable sun and weather shield with drip guard</li> </ul>
<b>Environmental</b>	Up to 95% relative humidity (non-condensing)
<b>Temperature</b>	-40° to 167°F (-40° to +75°C)
<b>Dimensions</b>	6 in W x 4.4 in W x 14.7 in L (152.4 mm H x 111.8 mm W x 373.4 mm L)
<b>Weight</b>	4.8 lbs (2.18 kg)
<b>Regulatory</b>	<ul style="list-style-type: none"> <li>• FCC Part 15, Subpart B, Class A regulations</li> <li>• NEMA TS2 2021</li> </ul>
<b>Warranty</b>	Three (3) year



Specifications	Autoscope OptiVu Processor
<b>Power</b>	24 to 48 VDC
<b>Communication</b>	<ul style="list-style-type: none"> <li>• 10/100/1000 WAN and Ethernet ports</li> <li>• USB 2.0 and 3.0</li> </ul>
<b>Environmental</b>	<ul style="list-style-type: none"> <li>• Meets TS-2 standards</li> <li>• Fan-less design</li> </ul>
<b>Temperature</b>	-30° to 165°F (-34° to +74°C)
<b>Dimensions</b>	2.165 in H x 9.25 in W x 4.92 in L (55 mm H x 235 mm W x 125 mm L)
<b>Weight</b>	6.5 lbs (2.95 kg)
<b>Regulatory</b>	<ul style="list-style-type: none"> <li>• FCC Part 15</li> <li>• NEMA TS2 2021</li> </ul>
<b>Warranty</b>	Three (3) year



Specifications	Autoscope OptiVu PLC Switch
<b>Power</b>	Input: 120 VAC / Output: 48 VDC (CH1-CH8, V1-V2)
<b>Communication</b>	<ul style="list-style-type: none"> <li>• 10/100 Mbps Ethernet port</li> <li>• HD-PLC ports for camera communication</li> </ul>
<b>Temperature</b>	<ul style="list-style-type: none"> <li>• -34° to +74°C (-29° to 165°F)</li> <li>• Up to 90% relative humidity (non-condensing)</li> </ul>
<b>Dimensions</b>	2.61 in x 7.74 in x 5.3 in (66 mm x 197 mm x 135 mm)
<b>Weight</b>	2 lbs 15 oz (1.31 kg)
<b>Regulatory</b>	<ul style="list-style-type: none"> <li>• NEMA TS 2-2021 compliant</li> <li>• FCC compliant</li> <li>• EN 50293:2012</li> <li>• FCC 15.107:2025 Class A</li> <li>• FCC 15.109(g):2025 Class A</li> <li>• FCC 15.109:2025 Class A</li> <li>• FCC 15.109:2026 Class A</li> <li>• ICES-003 Issue 7:2020 Class A</li> <li>• RoHS compliant</li> </ul>
<b>Warranty</b>	Three (3) years